

# VMware Alternative Support by Evernex

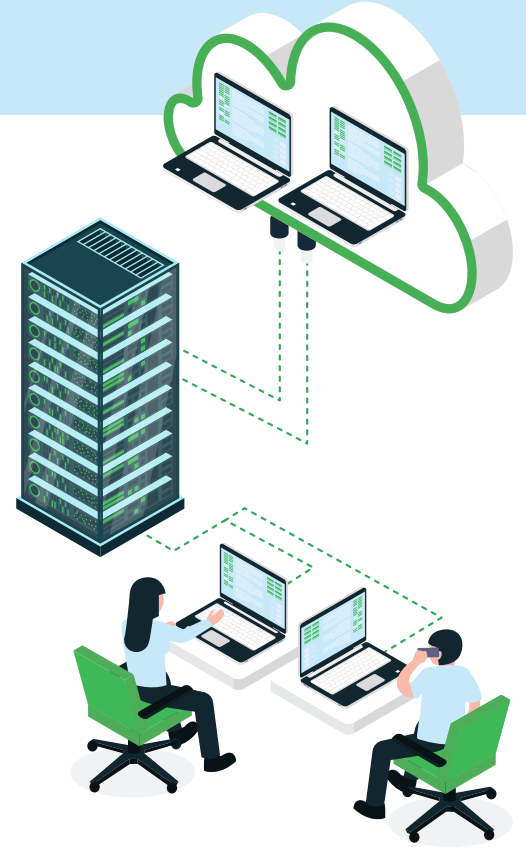
Third-party VMware support for greater control, cost efficiency, and business continuity ➔

Broadcom's recent shift to a subscription-only model has significantly impacted IT budgets and long-term planning.

Businesses must now choose: comply and overpay, migrate at high risk – or regain control.

**Evernex is your third path**

We empower organizations to continue using VMware products without forced upgrades or vendor lock-in.



## VMware Products Supported by Evernex ➔

Product Category	Supported Products
Virtualization & Infrastructure	vSphere, ESXi, vSAN, vVols, vCenter Server, vSphere Hypervisor
Cloud & Multi-Cloud Management	Cloud Foundation (VCF), vCloud Director, vCloud NFV
Networking & Security	NSX, Advanced Load Balancer (Avi), Firewall, ATP (via ANS)
Automation & Monitoring	vRealize / Aria Suite
Workplace & VDI	Horizon, Fusion, Workstation
Unified Endpoint Management	Workspace ONE UEM
Complementary Tools	ThinApp (part of Horizon), vCenter Converter (P2V/X2V)

## Included in Our Support Package →



SLA-based support with expert engineers



Ongoing system optimization and configuration assistance



Risk-free onboarding and full documentation review



End-to-end visibility and proactive follow-up



## Why Choose Evernex for VMware Support?

Enjoy uninterrupted use of your VMware perpetual licenses with expert third-party support.



Preserve your VMware perpetual licenses with no pressure to migrate



Reduce your VMware support costs by up to 70%



Global multilingual expert support – available 24/7



Access to expert VMware L3 resources



Flexible SLAs and human-led engagement



Hardware + Software integration for a complete lifecycle solution



Contact us for a personalized VMware support roadmap →

Evernex provides independent third-party support services for VMware products. We are not affiliated, associated, authorized, endorsed by, or in any way officially connected with Broadcom or any of their subsidiaries or affiliates.